

Park and St Peter's Post

FRIENDSHIP & KINDNESS | PATIENCE | INDEPENDENCE | HONESTY | BRAVERY | CURIOSITY
FRIENDSHIP | RESPECT | PERSEVERANCE | FORGIVENESS | COMPASSION | HOPE

'Let Your Light Shine' Matthew 5.16



Photos....

Thursday next week-St Peters individual photos-siblings from outside the school can come and have their photos together from 8.00am.

Photos....

Open day at St Peters.....

Does your child move into Key Stage 2 in September 2024?

YEAR 3 OPEN EVENTS

Jesus said 'Let Your Light Shine' Matthew 5.16

Come along and meet our team

18th October @ 10.15am, 2pm, 4pm and 6pm
8th November @ 10.15am and 4pm

Call us on **01933 622400**
for more information and to book



Proud to be part of the
Nene Education Trust

We need to know if your children have an allergy or if they are permitted to join us on local visits etc. We need to be sure that the information we have is accurate. We use the same information package at St Peters, Park and Manor. Here is the message that was in their newsletter this week and we would like our parents to be aware of this too. **Please log on and check the information we hold is accurate-its really important!**

Data checking

It is important that the data we hold for parents, carers and students is correct on the portals. In particular, we must hold up to date and accurate emergency contact details for parents and carers. As such, please ensure that you log onto the parent portal and check the details are correct that we hold, amending them as necessary. It is the responsibility of the legal guardians to update these records via the portal.

A reminder about Data checking and Arbor....

Taking our lead from the Manor newsletter this week-we MUST remind parents and carers that it is your responsibility to log on and check the information we have on file for you and your children. If we have an emergency-it is important that we can contact you!

The Big Ambition survey....

The Children's Commissioner for England has recently launched 'The Big Ambition' to hear directly from children, young people, and parents across the country. This is an opportunity to hear from all children, in every part of the country and in every setting. The survey will be used to encourage policymakers to think about children and young people's



needs, to ensure children's voices are reflected in the decisions that will affect them in years to come. Education settings play a critical role in enabling us to hear from as many children and young people as possible.

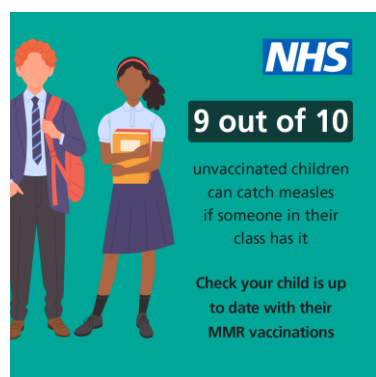
That is why we are encouraging all settings in England to take part and let their pupils have their say on what is important to them! To find out more head to The Big Ambition page

To take part in The Big Ambition survey visit:

www.childrenscommissioner.gov.uk/thebigambition.

A Message from The Local Authority on Measles / MMR vaccination....

Measles cases are rising across the country, with over 102,000 children starting primary school in England being at risk of catching the disease. We are asking education settings to share key messages from the NHS about MMR / measles and how to get vaccinated. The Back to school MMR Guidance [PowerPoint Presentation \(windows.net\)](#) from the NHS includes information to share.



Measles is highly infectious and if left unvaccinated nine out of ten children in a classroom can catch the disease if just one child is infectious. Please share these resources with colleagues, parents, and where suitable, community organisations to increase awareness and encourage parents to get their children vaccinated.

Harvest....

Both schools visited the church for our superb harvest festivals this week. St Peter's were the first to go-early on Monday with Park on Tuesday afternoon. It was a real pleasure to see the church full of our children and hear them sing. A big thank you to all our parents, carers and families who came along and supported-especially those who helped walk the children to the church on Tuesday!

Thank you also for your incredible generosity. Ginny and I drove the collected donations of food to the Raunds Food Bank-check out this huge haul!



Your kindness will go to support others and there is nothing better than kindness! Thank you!





Town Council events....

- Halloween Party 27th October – Tickets on sale Monday the 2nd October

Please see the poster attached for full details.
Raunds Town Council



Pretty in Pink....

This week we all dressed in pink and red to raise awareness of World Mental Health day and to raise money for our trust charity KELLY'S HEROES.

Thank you so much for your kind donations and the children looked bright and colourful!

[Kellys-Heroes Homepage](#)



Magnificent Millicent....

Millicent in Year 4 is completing a fantastic challenge to do 100 skips a day to raise money for cancer research. She is hoping to raise as much money as possible for the worthy cause, so if you can sponsor her towards this challenge, please find Millicent around school and fill in her sponsorship form.



Woodwind opportunities....

Northamptonshire Music and Performing Arts Trust are proud to announce availability for woodwind lessons at St Peter's.

They offer music lessons on the recorder, flute, clarinet and saxophone (some are age dependent.) Auditions are available before you sign up and instruments (excluding recorder) will be available on loan from NMPAT. Please speak the school office for costs on lessons, and to arrange an audition on your chosen instrument.

Here are two of our newest maestros....



Late for a pick up at Park-please let us know...!

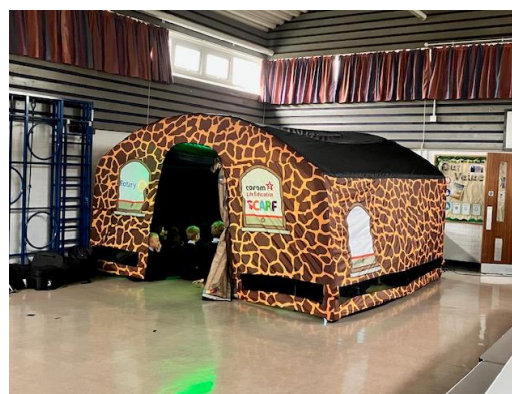
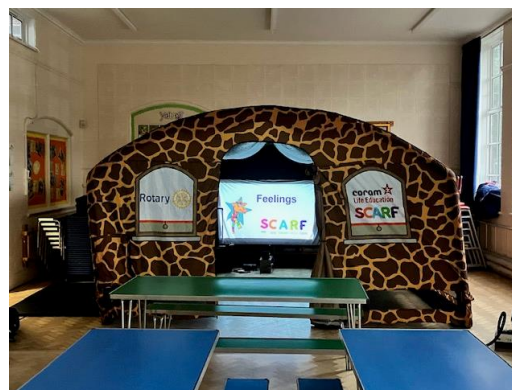
We realise that sometimes emergencies can occur when it is time to collect your child at 3.15pm and that on a rare occasion you may be late. If this situation arises, can you please inform the office as soon as possible. We have had a number of children very upset as we have been unable to explain where their parent/carer is.

Many thanks for your help in this matter.



Life Education Visits....

The Coram Life Education & SCARF team visited our schools this week. Pam set up her enormous tent in the school halls...



The children's charity Coram Life Education provides Health and Wellbeing Education support to schools. Workshops are delivered by Pam, an amazing educator!

- Early Years and Key Stage 1: children learn about keeping their bodies healthy, managing feelings, being a

good friend and the safe use of medicines.

- Key Stage 2: Years 3 and 5-children explore emotional needs, choices that can affect health and wellbeing, qualities of friendship, how to cope with bullying and the influence of friends. They also consider the effects and risks of drug use, including medicines, alcohol and tobacco as well as learning about how few people in their age group and older ages, actually use non-medical drugs – this is social norms education.

The sessions were awesome and the children loved the excitement of the tent- there was even a guest appearance from Harold the giraffe!



Match of the Day...!

Congratulations to our football teams yesterday. They were brilliant in the first NET cluster schools football festival. We finished 1st 🏆 and 3rd 🏆 all collecting a medal to take home. ⚽👏



West Stowe...

The Year 4s had a fantastic day at the Anglo Saxon village, West Stow. We started the day by exploring the replica village - we visited a sunken house, hall, workshop, weaving room and many more buildings.

The children asked some wonderful questions to the historians of the site during a Q&A session and impressed them with their knowledge from our lessons.

In the afternoon, we headed to the village museum. We saw a huge variety of artefacts from jewellery to human remains! We also learnt about what they wore and some of the children even decided to try out the Anglo Saxon fashion for themselves.

We ended the day by being investigators! Children were given their own artefact to explore before presenting their findings. A brilliant day had by all! Well done Year 4s.





Attendance...

(National average is 95.3%)

Park	
All students	96.4%
Eagles	96.3%
Kingfishers	93.8%
Sparrows	92.6%
Puffins	92.1%
Red Kites	98.8%
Robins	99.6%

Next week's dates...

W/B 16.10.2023

Monday:

StP Collective Worship

Park: Trust leader's visit

Park: 3.15-4.30 Multi skills club yr1 after school

Tuesday:

Park: Experience Harvest at the church - throughout the day our year groups will be walking to the church to learn all about this important time of the year

Wednesday:

StP: Open events at St Peters. 10.00am 2.00pm, 4.00pm and 6.00pm

Park: 3.15-4.30 Multi skills club yr2 after school

Thursday:

StP school individual photos-siblings from 8.00am

Friday:

Park VIP Assembly,

StP PCSO talk about Halloween and Fire Works

StP Celebration Collective Worship

St Peter's	
All Students	97.4%
St George	96.8%
St Christopher	98.4%
St Martha	99.3%
St Andrew	97.5%
St Mary	95.6%
St Cecilia	98.1%
St David	95.8%
St Patrick	98.1%



This week's messages....



JOIN THE JUNIOR PARKRUN FAMILY

WALK, JOG, RUN, VOLUNTEER
or simply come and watch - it's up to you!

FAMILY-FRIENDLY 2K EVENTS

Every Sunday morning

FOR 4-14 YEAR OLDS

Adults can join in with the kids too!

EVERYONE WELCOME

Walk, jog, run, hop, skip or jump - it's up to you!

FREE & EASY TO TAKE PART

No special kit needed - wear whatever you like

HAVE FUN BEING ACTIVE

Share high fives and big smiles!

MAKE FRIENDS

Meet lots of new people

LEARN NEW SKILLS

Kids can volunteer in lots of roles

FEEL HAPPY AND PROUD

Try your best and celebrate your achievements

"We all do it together as a family. The volunteers are really nice, it's fun and you can walk if you want to!"

Register at parkrun.com
and head down to your local junior parkrun event!

notes:

Croyland Park junior parkrun - every Sunday at 9am
Croyland Park, Wellingborough, NN8 2EN
email: croylandparkjuniors@parkrun.com



Raunds Park Infant School Lunchtime Supervisor

01933 622415



We are looking for an enthusiastic, motivated, kind and caring lunchtime supervisor to join our hard working team. Working with our infant children aged 4-7, ensuring they have a wonderful and safe lunchtime.

You will be expected to take a proactive role in supporting our children in their play and will be responsible for supervising the children whilst eating in the hall and then playing outside. On wet days - lots of ideas for classroom fun would be great!

Previous experience is not essential, but you will need to be reliable and be enthusiastic about working and playing with children.

You can apply for this exciting post here:

<https://accesspeople.accesscloud.com/NeneEducationTrustRecruitment/>

Principal: Mrs. Currell
Raunds Park Infants
Park Street
Raunds
NN9 6NB



Does your child move into Key Stage 2 in September 2024?

YEAR 3 OPEN EVENTS

Jesus said 'Let Your Light Shine' Matthew 5.16

Come along and meet our team

18th October @ 10.15am, 2pm, 4pm and 6pm

8th November @ 10.15am and 4pm

Call us on 01933 622400
for more information and to book



St Peter's
C.E. Academy



Proud to be part of the
Nene Education Trust

Does your child start school in September 2024?

EYFS OPEN EVENTS

KIND | PATIENT | INDEPENDENT | HONEST | BRAVE | CURIOUS

Come along and meet our team

6th November @ 2pm and 6pm

8th November @ 2pm and 6pm

Call us on 01933 622415
for more information and to book



Proud to be part of the
Nene Education Trust

THE
CHESTER
HOUSE
ESTATE

Learning &
Community
Department

FREE SEND FRIENDLY

**SPOOKY WALKTHROUGH
PRIVATE VISITS**

MONDAY 30TH OCTOBER 10AM - 2PM

30-MINUTE PRIVATE SLOTS AND A QUIET SPACE AVAILABLE
FREE PRE VISIT FOR A TEACHER

SELECT FROM A MENU OF POSSIBLE ADAPTATIONS
INCLUDING FOR THOSE WITH VISUAL IMPAIRMENTS

TO BOOK A SLOT FOR YOUR CLASS OR FOR
MORE INFORMATION EMAIL
LEARNING@CHESTERHOUSEESTATE.ORG






GIRLS PLAYER DEVELOPMENT

Discover Your Full Potential: At Girls Player Development, we're committed to nurturing talent and helping players reach their peak performance.

FRIDAY
 U10 - U12 | 5:30 - 6:30PM
 U13 - U15 | 6:30 - 7:30pm

LOCATION - MOULTON 3G, NN3 7QF

LIMITED SPOTS AVAILABLE - DON'T MISS OUT!

WWW.ELITEFOOTBALLCOACHING.ORG



Northampton
Active

October Half Term

Monday 23rd	Paddle Sessions Parent & Tot Parent & Child Discover Paddlesports
	
Tuesday 24th	Kids Club (Under 8s)
	
Wednesday 25th	Whitewater Sessions Whitewater Tubing Whitewater Rafting
	
Thursday 26th	Kids Club (9 - 16 yrs)
Book Online ★ northamptonactive.com	

**St Peter's Church,
Raunds**

Our next Messy Church will
be Saturday 7th October
3pm – 5pm

Crafts

Worship



Games

Family Fun

Food

FREE TO ATTEND

Children under the age of 18 must be accompanied by an adult



Vacancy

Local Committee - Community Representative



In the Nene Education Trust, all our schools are unique, something we are proud of. All our schools value the importance of working closely within the communities that they serve.

As parents you have a vested interest in the experience your children receive at the school. To that extent, we invite any parents that are interested in adding value to the school to consider the opportunity of joining our local committee.

Chris Hill - CEO

Commitment

- At least three Local Committee meetings per year
- Board Committee meetings (if appropriate as a member of that committee)
- Focused visits to the school
- Remote involvement via email/telephone
- Regular review of reports and documentation

About You

As an ideal candidate you will be able to:

- Work as a team
- Attend meetings and be prepared to ask questions, contribute to discussions and commit to agreed actions
- Be focused on problem solving and be ready to learn from past experiences
- Be respectful of the views of others and be open to new ideas and thoughts
- Treat all confidential information confidentially
- Act with integrity, avoiding any personal conflicts of interests
- Develop a deep understanding of the vision and ethos of the school and of the roles played by all individuals in the fulfilment of this
- Act as an ambassador for the Trust and its schools and support them in public
- Commit to self-evaluation, training and development

Who is the Role Suitable For

Committee members must be above all enthusiastic champions of the school, the pupils, staff and parents. There is no pre-requirement to an understanding of education, teaching or committee work. This will be developed through experience and development in the role. Committee members are drawn from parents, staff and members of the wider community.

Detailed roles and responsibilities are listed under responsibilities.



Local Committee

The role of those serving on Local Committee is an important one, and they are a key support to the school's leadership team, ensuring there is local community engagement with the school and that the academy serves its local community.

Over the course of their term of office, members of Local Committees will get to know their school well. In addition to attending formal meetings, they are likely to visit the school (and Visits Policy to support with this), attend school events and may also be involved in recruitment. They can be asked to participate in panels, for example if this is required to hear complaints, or for exclusions. Training will be provided for members of Local Committees who may be involved in panels.



Responsibilities

1. To champion the trust vision and values in the school and to ensure the spiritual wellbeing of the pupils
2. To determine the educational and spiritual character, mission or ethos of a particular school (to the extent that it is not inconsistent with that of the Nene Education Trust) in collaboration with the Principal
3. To appoint Committeemembers with specific responsibilities for special educational needs and LAC, pupil premium, mental health and wellbeing, and as appropriate Christian Ethos and Careers Information.
4. To review and amend school specific policies (in line with the Trust prescribed delegated responsibilities for this)
5. To implement an auditable means whereby the school can receive and react to pupil, parent and community feedback
6. To provide a perspective and viewpoint of the stakeholder group they represent to the principal and senior leadership team of the school;
7. To be familiar with and note progress against the school improvement plan
8. To monitor the effectiveness of the school SEND provision
9. To monitor the deployment and impact of Pupil Premium, Year 7 Literacy and Numeracy Catch-up Premium (secondary) and Sports Premium (primary)
10. To monitor the implementation of the school's behaviour policy
11. To ensure the safeguarding, wellbeing and health and safety of pupils and staff.
12. To establish and maintain relationship with the local community, including parents.

Please refer to the full scheme of delegation for full details.



We Provide

The Nene Education Trust will provide full support in training and development when entering the role. We offer:

- Frequent training and development courses.
- Documents and templates to assist you in completing mandatory forms.
- A support network for inductions and continued support.
- Online courses for support in your elected field/ committee role. These can be completed in your own time and also provide personal development.
- Greater understanding of the inner working of both the school and the trust.

Local Committee and Link Roles

Ambassador role

The Local Committee members act as ambassadors for the school, furthering the aim of the school being a civic structure and a hub of the local community. As an ambassador your main responsibilities are to represent and support the community aspiration where your school is located

- To be demanding of the Trust so that the school receives the support it needs to be the best it can be
- To understand the challenges of the community and to explore how best education can tackle these
- To have a strong representative voice of the local community on the local committee team
- To ensure that community dis-advantage never becomes an excuse

Link Roles

To help ensure that the Local Committees have sufficient insight to effectively fulfil their roles, the Trust has established link roles. These roles enable a deeper understanding of and insight into key areas for the Trust.

These are:

- Pupil Premium
- SEND
- Attendance and Behaviour
- Mental Health and Wellbeing
- Christian Ethos (CE schools only)
- Careers Information (Secondary only)

Other link roles can be agreed by the Trust or School Committee at any time.